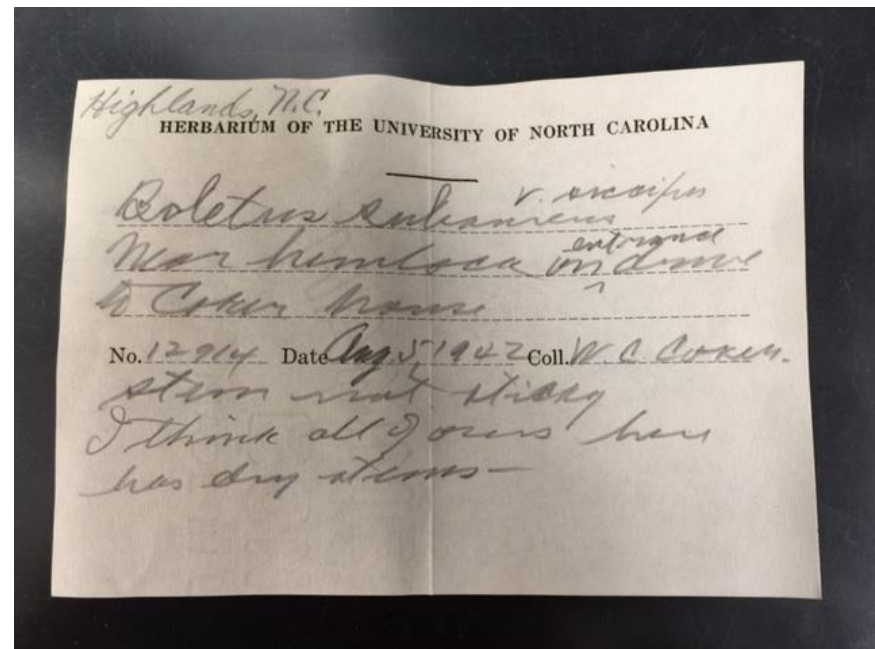


# Lessons Learned

at the University of North Carolina Herbarium (NCU)

## MYCOPORTAL

limited use of undergrads & volunteers due to fragile collections and handwritten labels



# Macroalgae.org

- Extensive use of volunteers & students to stamp accession #, affix barcodes
- Imaging done by undergrads & temp staff
- Databasing done by temp staff (2), undergrads (3-5), herbarium staff (2)
- CHALLENGES:  
details, details, details; wet collections, world-wide distribution

NCU is also imaging:

LSU (58, completed)

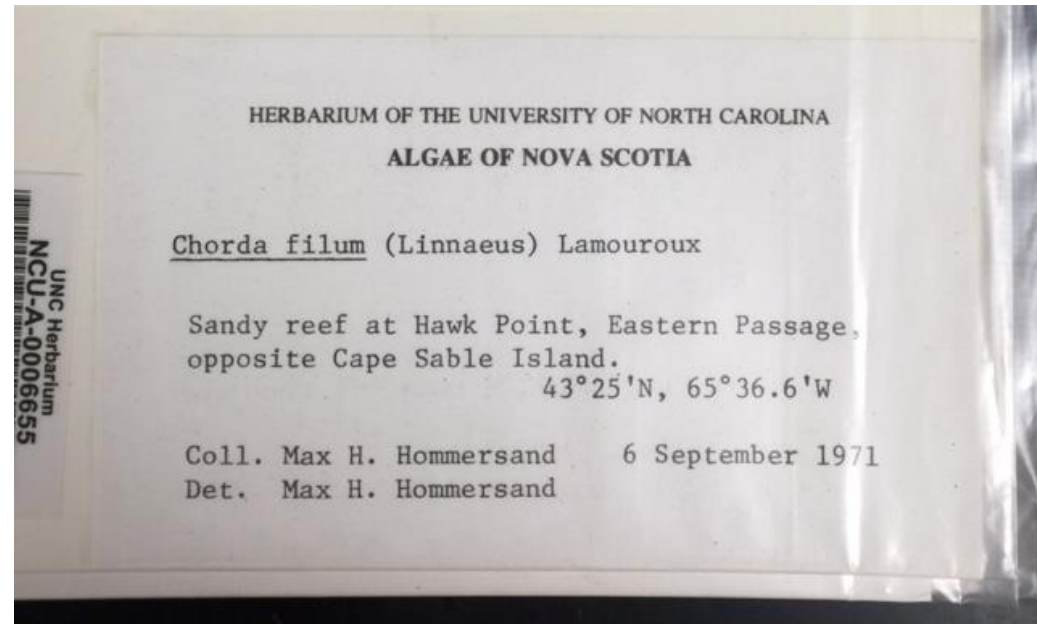
UNA (1608, completed)

USCH (~ 2000, in progress)

TAES (~ 1000, in progress)

FLAS (~2500)

WNC (~6000)



# Ownership

- Put one person in charge of imaging project
  - Clear goal with visible progress
  - Reward! Summary report, newsletter article, poster...
- 
- CHALLENGES for vascular plant project:  
Magnitude; High use collection (new accessions, loans, research use); Marking specimens?