

How to clean the Epson 10000XL scanner

Instructions supplied by Andrew McRobb (A.McRobb@kew.org)

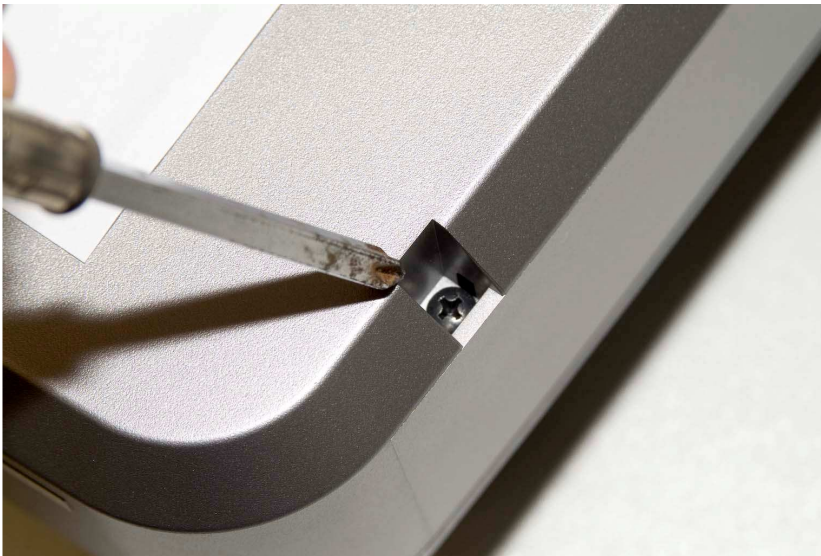
1. Assemble the required tools

Required: Vacuum cleaner, Phillips screwdriver, cleaning cloths (e.g., Microweb)

2. Turn the scanner the correct way up on a table.

3. Remove screws

On the top surface you will find 4 plastic covers two on the left and two on the right. Remove these and loosen the screws underneath.

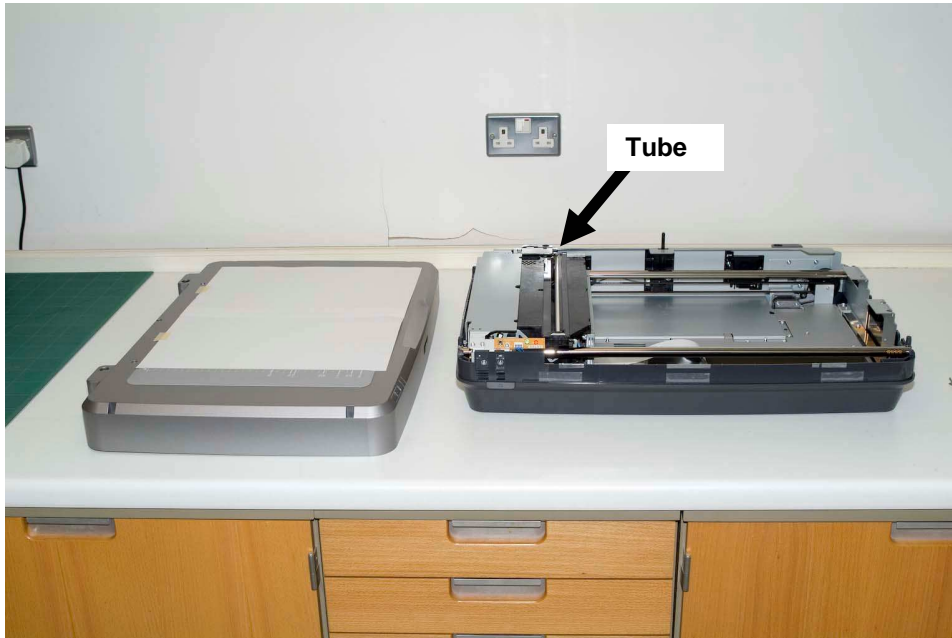


On the back of the machine you will find one other screw to be removed completely.



4. Remove the cover with the glass

Once you've removed the screws, this cover will lift off.



NOTE: do not lean over the open scanner, to avoid hair and other particles falling in.

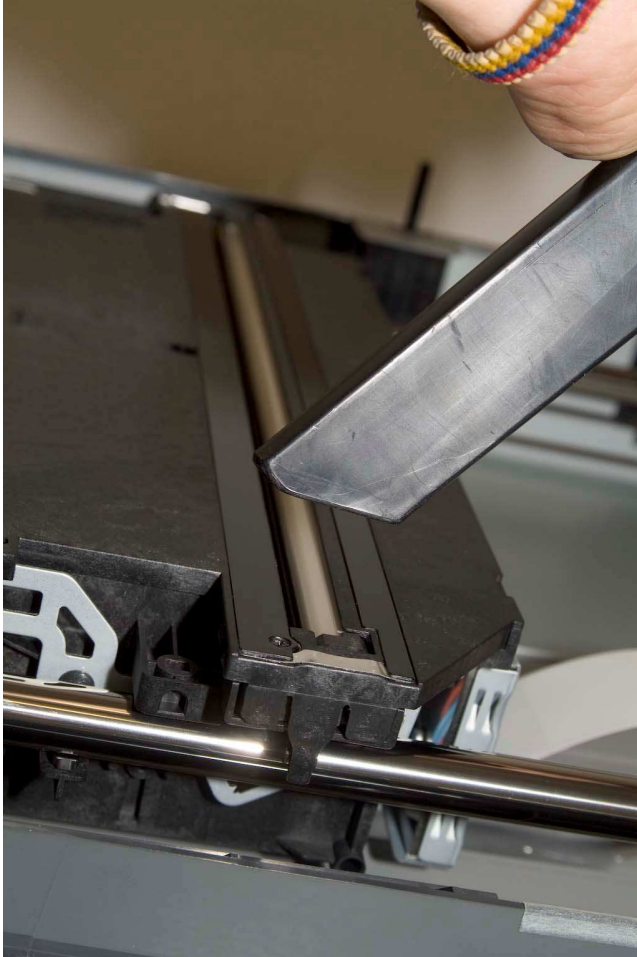
5. Clean the glass

Wipe the glass with Microweb cleaning cloths or something similar that does not leave hairs or fibers behind. I don't use any glass cleaner only the cloths.

When cleaning the glass, fold the cloth around one finger and run it quite firmly along the glass. You will see it gathers up quite a lot of dust. Then move to a clean section on the cloth and run another line up the glass. Repeat until you've cleaned all of the surface. It will be obvious at certain angles to see which bits were missed!

6. Vacuum

Use the vacuum cleaner to suck any dust out from around the tube inside.



Hold the nozzle above the light and over the gap in the scanning head. Move it from side to side being careful not to touch the tube.

Make sure the vacuum nozzle is clean and that the motor and exhaust is at pipe's length from the scanner

NOTE: be careful not to touch the tube (or other delicate parts inside) with the vacuum cleaner, so as not to cause scratches.

7. Reassemble

Carefully replace the lid, invert the scanner and make a test scan to see if any dust particles are on the light source causing long lines.