

Using GIS for Geologic Field Mapping

Ashley Adams
Drexel University



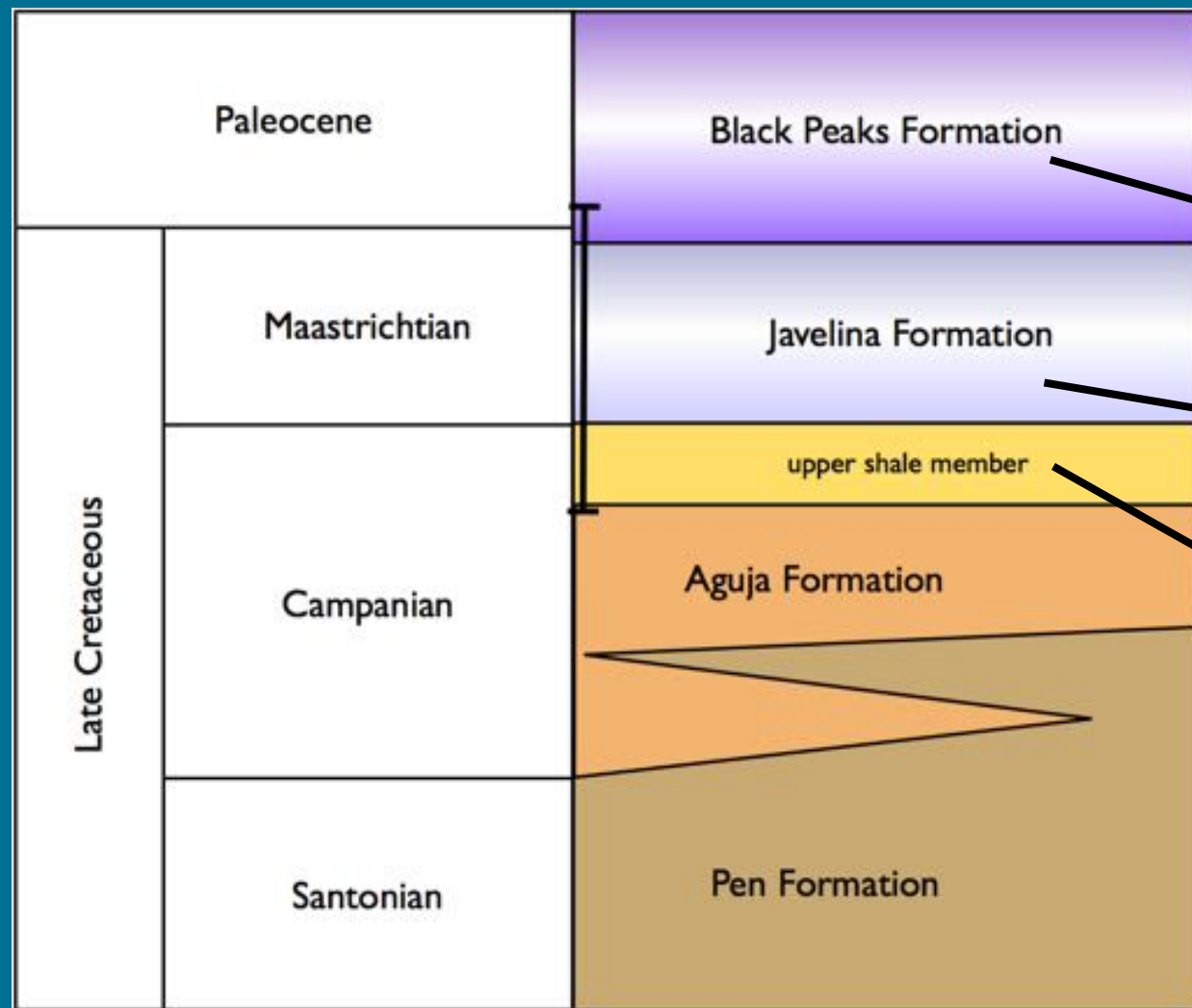
Outline

- Background- Big Bend Example
- Lithostratigraphy
 - Aguja
 - Javelina
 - Black Peaks
- Methods
- Map



Background- Mapping

Example Big Bend



Lithostratigraphy

Aguja Formation



Lithostratigraphy

Javelina Formation



Lithostratigraphy

Black Peaks Formation



Methods



Opérateur 22:47

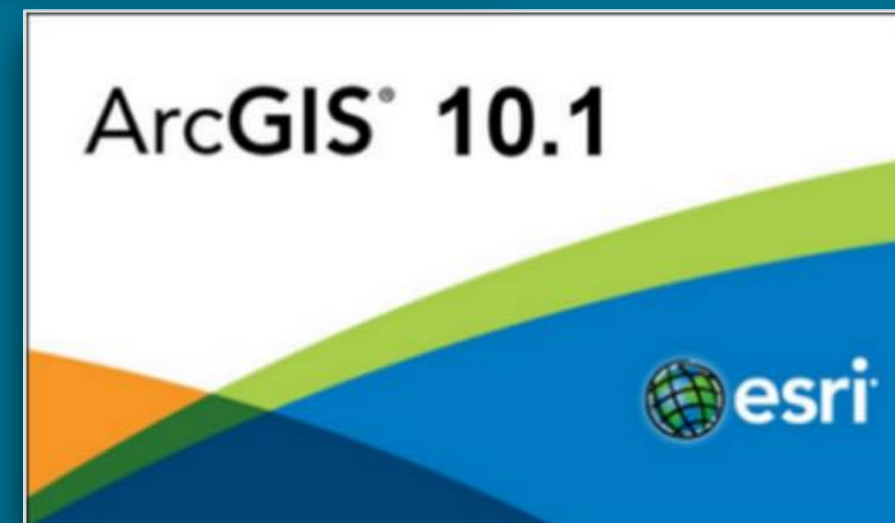
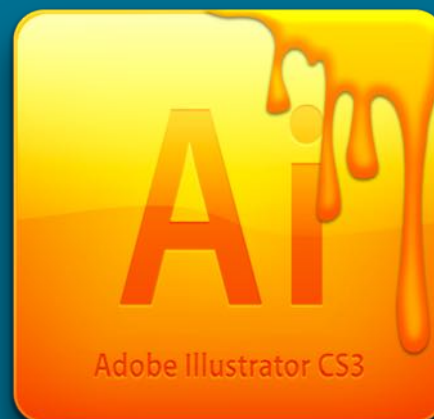
Calibrate North Collection: Hainberg

Heading / Dip
297° NW / 18.3°

Strike: 27° Planar
Lat.: 54.10394° Lination
Long.: 10.28394° Color:

Get Data (ID:3)

Data Measure Manual Diagram Info



Results and Discussion

Mapping



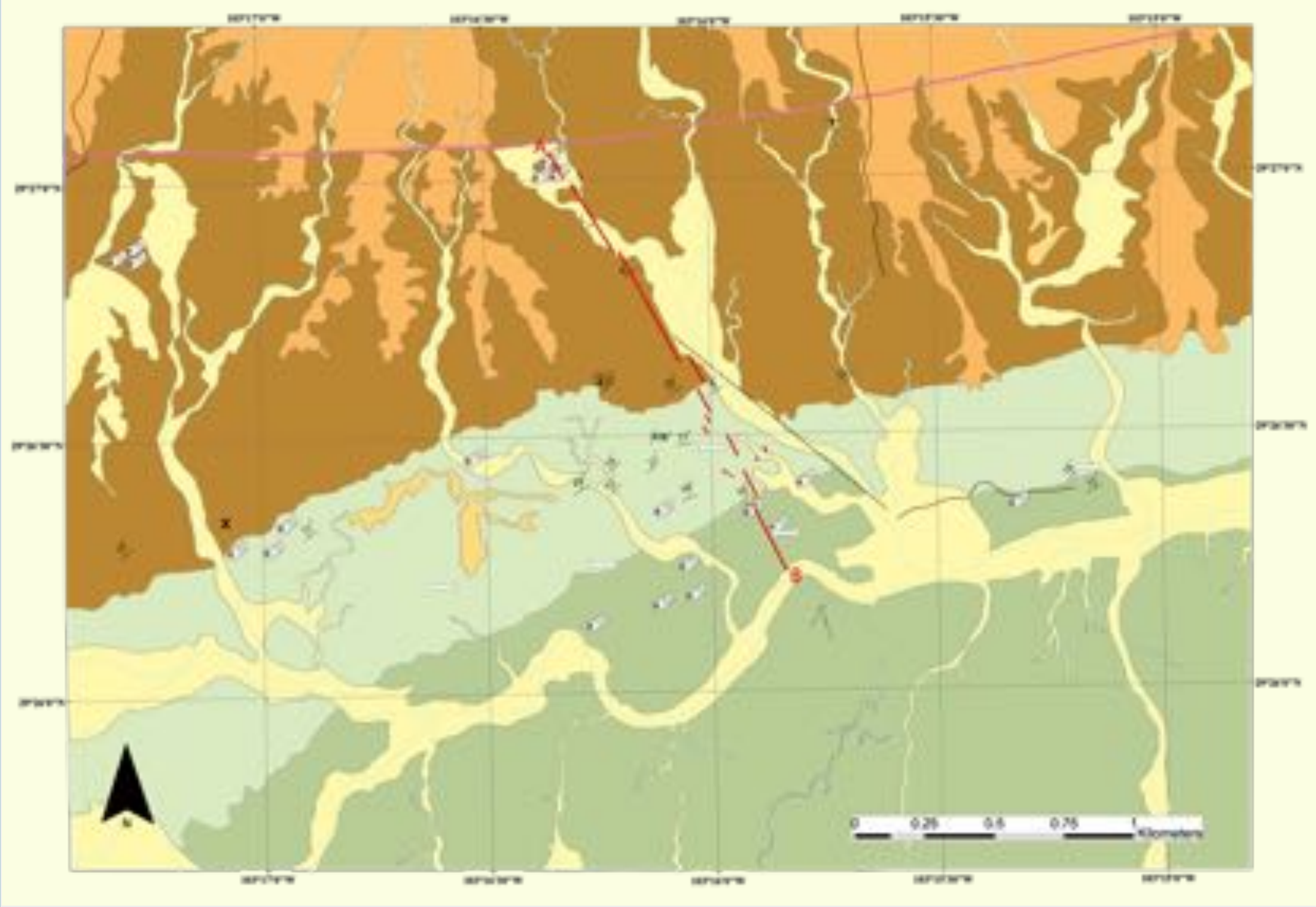
Legend

- Qaw Quaternary Alluvium
- Qoa Pleistocene Alluvium
- Qia Pediment Surfaces
- Eocene Dike
- TKbp Black Peaks Formation
- Kj Javina Formation
- Ka Aguja Formation
- ☞ Fossil
- ☞ Wood
- ↗ Strike/Dip
- ↘ Joint direction
- Fault
- Streambeds
- Roads and Trails
- X Tuff location

A

B

Line of section





Acknowledgments

Arthur Busbey- Texas Christian University

Rosillos Mountain Ranch

Big Bend National Park

Steve Wick

Ted Daeschler- Academy of Natural Sciences of Drexel University



Questions?