

# Herbarium Pacificum Imaging: Pros & Cons



Nicole Shun  
Bishop Museum  
Natural Science/Botany

## Herbarium Pacificum Equipment



# Herbscan

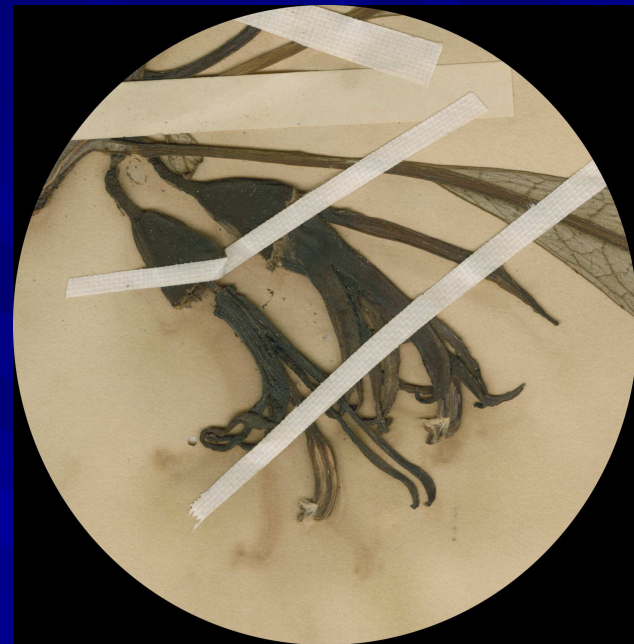
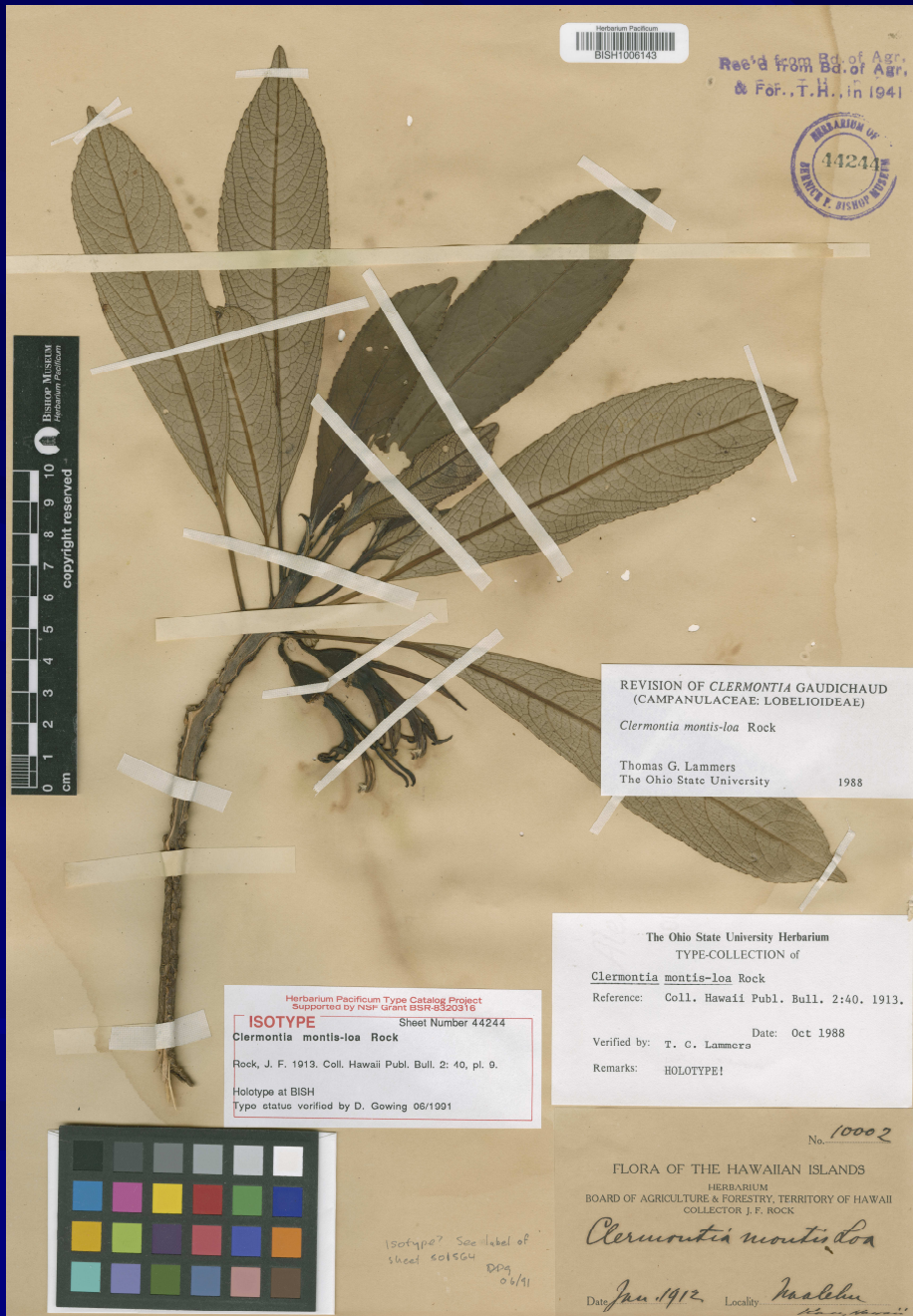
## PROS

- Scanning photos at 600DPI
- Database clean up during imaging
- Clarity
- Easily converted to .TIF with Photoshop software
- Work flow is more efficient

## CONS

- Scanning photos at 600DPI becomes time and data consuming
- Scanner has become obsolete
- Carpologica as well as larger specimens do not fit in the scanner
- Specimen wear and tear





# Mamiya 645DF

## PROS

- Using the Mamiya to image is quick
- Processing through Capture One makes.Tif conversion more thorough in batches
- Efficient work flow
- Able to digitize flat, 3d and larger specimens

## CONS

- Processing takes longer
- Having to constantly set the f/stop and aperture
- Mamiya equipment is not cost efficient

# Mamiya DL28

## PROS

- Speeds up work flow
- Small file sizes

## CONS

- Lens is randomly uncooperative
- Camera is costly to maintain and we lose valuable work time
- Using batteries VS using AC Adapter
- Camera randomly creates duplicates

# Capture One

## PROS

- Bulk processing
- Ability to create white balance and light profile

## CONS

- Glitchy
- RAM and CPU issues when generating thumbnails
- Bulk processing becomes capped at 100-200 specimens (RAM issue?) i.e. Error messages (Mamiya DL28)
- Communication errors (Mamiya 645)



Date	Description
1/10/14 2:18 PM	Camera Error
1/13/14 4:50 PM	Camera Error
1/15/14 11:56 AM	New LCC Profile
1/15/14 11:57 AM	Camera Error
1/23/14 12:58 PM	Camera Error
2/6/14 3:22 PM	Could not process file.
2/6/14 3:22 PM	The folder "BISH1035136.jpg.cos" doesn't exist.
2/6/14 3:22 PM	The folder "BISH1035137.jpg.cos" doesn't exist.
2/6/14 3:22 PM	The folder "BISH1035135.jpg.cos" doesn't exist.
2/6/14 3:22 PM	Could not process file.
2/6/14 3:22 PM	Could not process file.
2/6/14 3:22 PM	Could not process file.
2/6/14 3:22 PM	Could not process file.
2/6/14 3:22 PM	Could not process file.
2/6/14 3:22 PM	Could not process file.
2/6/14 3:22 PM	Could not process file.
2/6/14 3:22 PM	Could not process file.
2/6/14 3:22 PM	Could not process file.
2/6/14 3:22 PM	Could not process file.
2/6/14 3:22 PM	Could not process file.
2/6/14 3:22 PM	Could not process file.
2/6/14 3:22 PM	Could not process file.
2/6/14 3:22 PM	Could not process file.
2/6/14 3:22 PM	Could not process file.
2/6/14 3:22 PM	Could not process file.
2/6/14 3:22 PM	Could not process file.
2/6/14 3:22 PM	Could not process file.
2/6/14 3:22 PM	Could not process file.
2/6/14 3:22 PM	Could not process file.
2/6/14 3:22 PM	Could not process file.
2/6/14 3:22 PM	Could not process file.
2/6/14 3:22 PM	Could not process file.
2/6/14 3:22 PM	Could not process file.
2/6/14 3:22 PM	Could not process file.

Description: Exception: Unable to enable device for tethered communication..  
Domain: com.phaseone.captureone

Select event to disclose details  
 Show panel for new events

2/6/14 3:22 PM	Could not process file.
2/6/14 3:22 PM	Could not process file.
2/6/14 3:22 PM	Could not process file.
2/6/14 3:22 PM	Could not process file.
2/6/14 3:22 PM	Could not process file.
2/6/14 3:22 PM	Could not process file.
2/6/14 3:22 PM	Could not process file.

Description: Exception: Unable to enable device for tethered communication..  
Domain: com.phaseone.captureone

Select event to disclose details  
 Show panel for new events

Date	Description
4/17/13 12:18 PM	You don't have permission to save the file "BISH1011920.MOS.cos" in the folder "Settings70".
4/17/13 12:18 PM	You don't have permission to save the file "BISH1011749.MOS.cos" in the folder "Settings70".
4/17/13 12:18 PM	You don't have permission to save the file "BISH1011863_a.MOS.cos" in the folder "Settings70".
4/17/13 12:18 PM	You don't have permission to save the file "Capture One 0052.MOS.cos" in the folder "Settings70".
4/17/13 12:18 PM	You don't have permission to save the file "Capture One 0075.MOS.cos" in the folder "Settings70".
4/17/13 12:18 PM	You don't have permission to save the file "Capture One 0146.MOS.cos" in the folder "Settings70".
4/17/13 4:03 PM	You don't have permission to save the file "Capture One 0146.MOS.cos" in the folder "Settings70".
4/17/13 4:03 PM	You don't have permission to save the file "Capture One 0075.MOS.cos" in the folder "Settings70".
4/17/13 4:03 PM	You don't have permission to save the file "Capture One 0052.MOS.cos" in the folder "Settings70".
4/18/13 6:34 AM	You don't have permission to save the file "danielle.MOS.cos" in the folder "Settings70".
4/18/13 6:43 AM	You don't have permission to save the file "3.28.13.4.15.13 1220.MOS.cos" in the folder "Settings70".
4/18/13 6:51 AM	You don't have permission to save the file "3.28.13.4.15.13 1220.MOS.cos" in the folder "Settings70".
4/18/13 6:53 AM	You don't have permission to save the file "7782.MOS.cos" in the folder "Settings70".
4/18/13 7:03 AM	You don't have permission to save the file "7782.MOS.cos" in the folder "Settings70".
4/18/13 7:03 AM	You don't have permission to save the file "3.28.13.4.15.13 1220.MOS.cos" in the folder "Settings70".
1/9/14 3:29 PM	Camera Error
1/9/14 3:31 PM	Camera Error
1/9/14 3:31 PM	Camera Error
1/9/14 3:31 PM	Camera Error
1/9/14 3:31 PM	Camera Error
1/9/14 3:37 PM	New LCC Profile
1/10/14 2:18 PM	Camera Error
1/13/14 4:50 PM	Camera Error
1/15/14 11:56 AM	New LCC Profile
1/15/14 11:57 AM	Camera Error
1/23/14 12:58 PM	Camera Error
2/6/14 3:22 PM	Could not process file.
2/6/14 3:22 PM	The folder "BISH1035136.jpg.cos" doesn't exist.

Description: Exception: Unspecified error.. (340#2147680262) Leaf camera communication error (LeafSDK): A connection error has occurred. Please try to reconnect the camera back.  
Domain: com.phaseone.captureone

Select event to disclose details  
 Show panel for new events

Clear Show All Close

2/6/14 3:22 PM	Could not process file.
2/6/14 3:22 PM	Could not process file.
2/6/14 3:22 PM	Could not process file.
2/6/14 3:22 PM	Could not process file.
2/6/14 3:22 PM	Could not process file.
2/6/14 3:22 PM	Could not process file.
2/6/14 3:22 PM	Could not process file.
2/6/14 3:22 PM	Could not process file.

Description: Exception: Unspecified error.. (340#2147483671) Leaf camera communication error (LeafSDK): Internal support library error  
Domain: com.phaseone.captureone

Select event to disclose details  
 Show panel for new events

Clear Show All Close



# Cons: Error Messages

Description: Exception: Unspecified error.. (340#2147680262) Leaf camera communication error (LeafSDK): A connection error has occurred. Please try to reconnect the camera back.  
Domain: com.phaseone.captureone

Description: Exception: Unable to enable device for tethered communication..  
Domain: com.phaseone.captureone

Description: Exception: Unspecified error.. (340#2147483671) Leaf camera communication error (LeafSDK): Internal support library error  
Domain: com.phaseone.captureone

[https://www.idigbio.org/wiki/index.php/Digitization\\_Resources](https://www.idigbio.org/wiki/index.php/Digitization_Resources)

<http://www.phaseone.com/Imaging-Software/Capture-One-Pro-7.aspx>

<http://www.jstor.org>

# MAHALO



Ben Brown, Barbara Kennedy, Shelley James & Varnelle Magoon