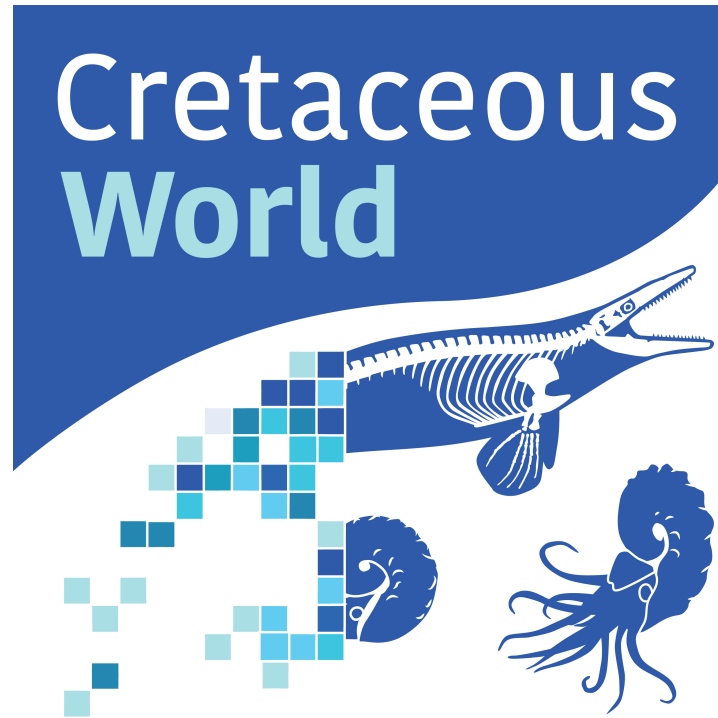
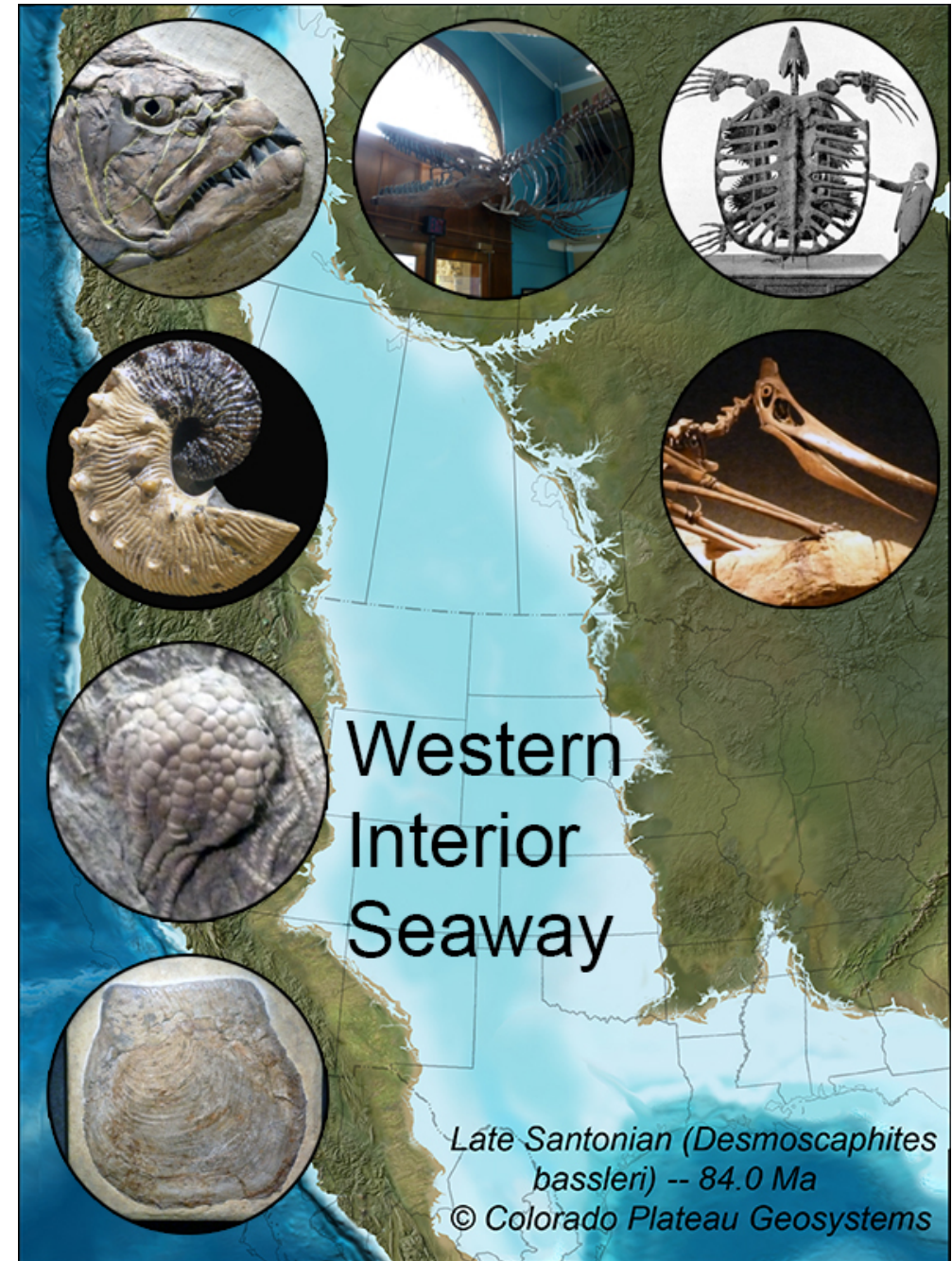


The Cretaceous World TCN



Jonathan R. Hendricks

Paleontological Research Institution





Institutions and Participants

TCN (9 institutions):

- **University of Kansas:** Bruce S. Lieberman, Chris Beard & Jim Beach
- **University of Texas:** Ann Molineux, Rowan Martindale, Lisa Boucher & Matt Brown
- **University of Colorado:** Talia Karim
- **Paleontological Research Institution:** Jonathan Hendricks
- **American Museum of Natural History:** Neil Landman & Ruth O'Leary
- **Yale University Peabody Museum of Natural History:** Susan Butts & Chris Norris
- **South Dakota School of Mines & Technology:** Laurie Anderson & Maribeth Price
- **University of New Mexico:** Corinne Myers
- **Sternberg Museum / Fort Hays State University:** Laura Wilson

PENs (2 institutions):

- **University of Oklahoma:** Steve Westrop & Roger Burkhalter
- **LA County Museum:** Austin Hendy & Lindsay Walker

Blue: Continuing; **Black:** Finished



Digitization Progress

- > 494,500 specimens databased
(original goal 168,000)
- > 15,600 fossil localities georeferenced
- > 23,500 images of fossil specimens

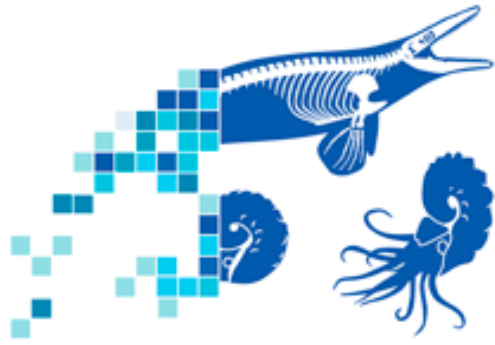
Data shared/published via iDigBio and institutional websites



Xiphactinus audax

Broader Impacts



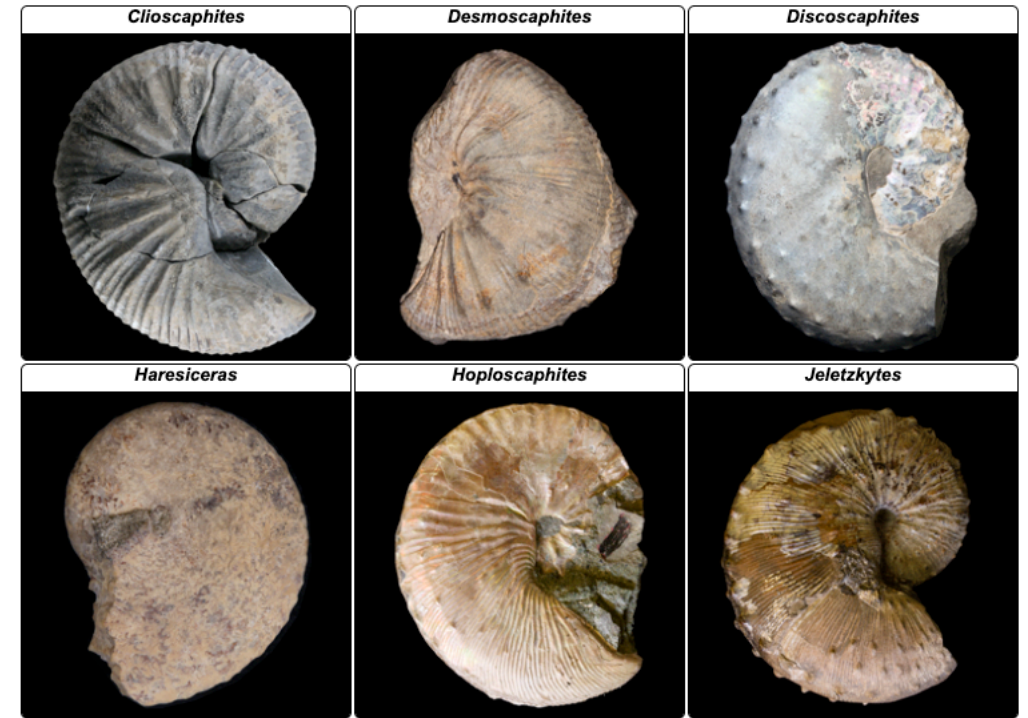


Cretaceous Atlas of Ancient Life

Western Interior Seaway

Online fossil identification field guide to over 760 species from the Cretaceous of the Western Interior Seaway, including:

- Taxonomic information
- Stratigraphic and paleogeographic occurrence data
- Images
- Distributional map



www.cretaceousatlas.org

Mobile Apps

Digital Atlas App:

- Mobile version of Cretaceous Atlas (as well as Ordovician, Pennsylvanian, and Neogene atlases)
- iOS and Android

Digital Atlas Identify App:

- Take pictures of fossils and submit them for identification by experts
- iOS



Digital Encyclopedia of Ancient Life

Online, open access paleontology textbook.

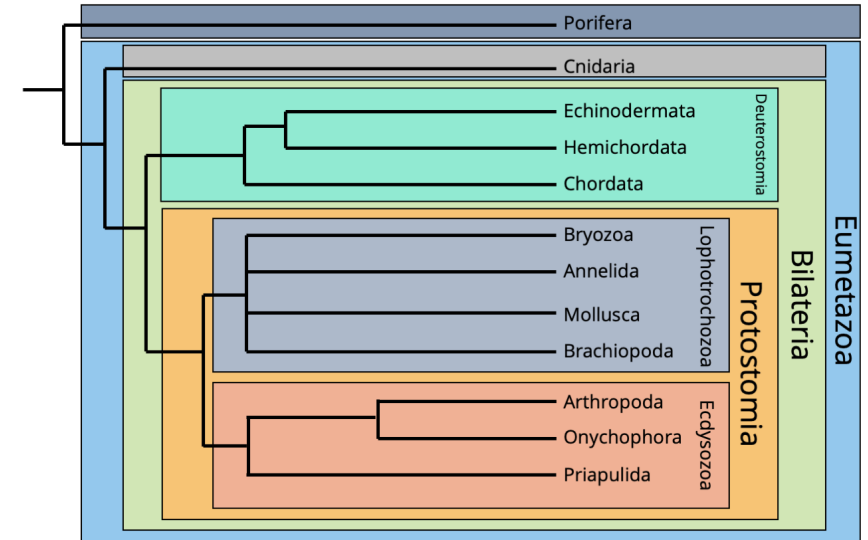
Coverage of nearly all major macroinvertebrate groups.

Plant structure and development, paleobotany.

Major concepts:

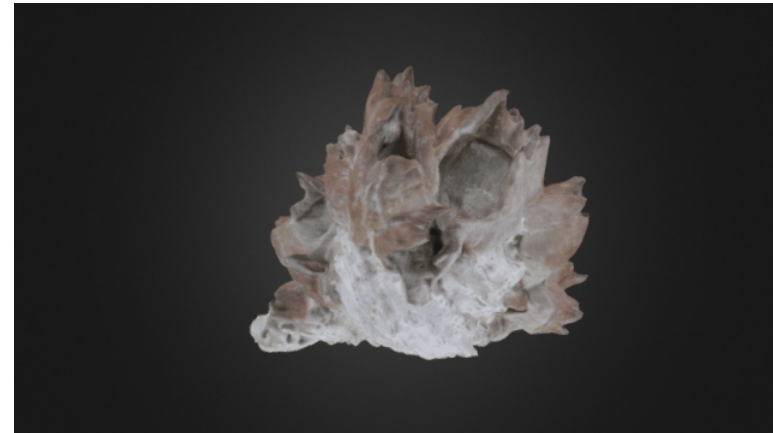
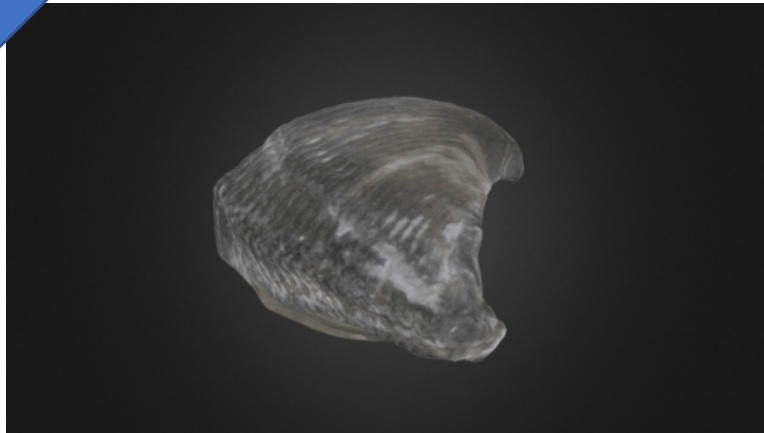
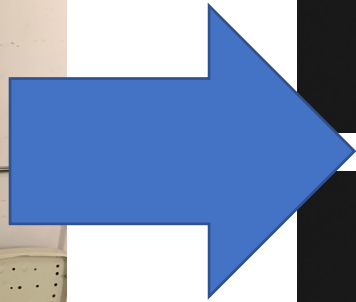
- Quality of the fossil record
- Geologic time
- Evolution and the fossil record
- Systematics
- Paleoecology
- Conservation paleobiology

Regularly accessed by more than 1,000 users per day.



Digital Atlas Virtual Collection

- Collection of over 500 3D photogrammetry models of fossil and specimens, all with public domain or CC licensing.
- Curated into virtual drawers; may be printed, or embedded elsewhere.



igital Atlas of Ancient Life

[HOME](#) [FIELD GUIDES](#) [APPS](#) [DIGITAL ENCYCLOPEDIA](#) [VIRTUAL COLLECTION](#) [TEACHING RESOURCES](#) [UPDATES](#) [ABOUT](#) [DONATE](#)

Welcome to the Digital Atlas of Ancient Life

Identify fossils and explore the diversity and history of life on Earth



www.digitalatlasofancientlife.org/



This TCN and its broader impacts are supported by the NSF ADBC program.

