



## **iDigPaleo**

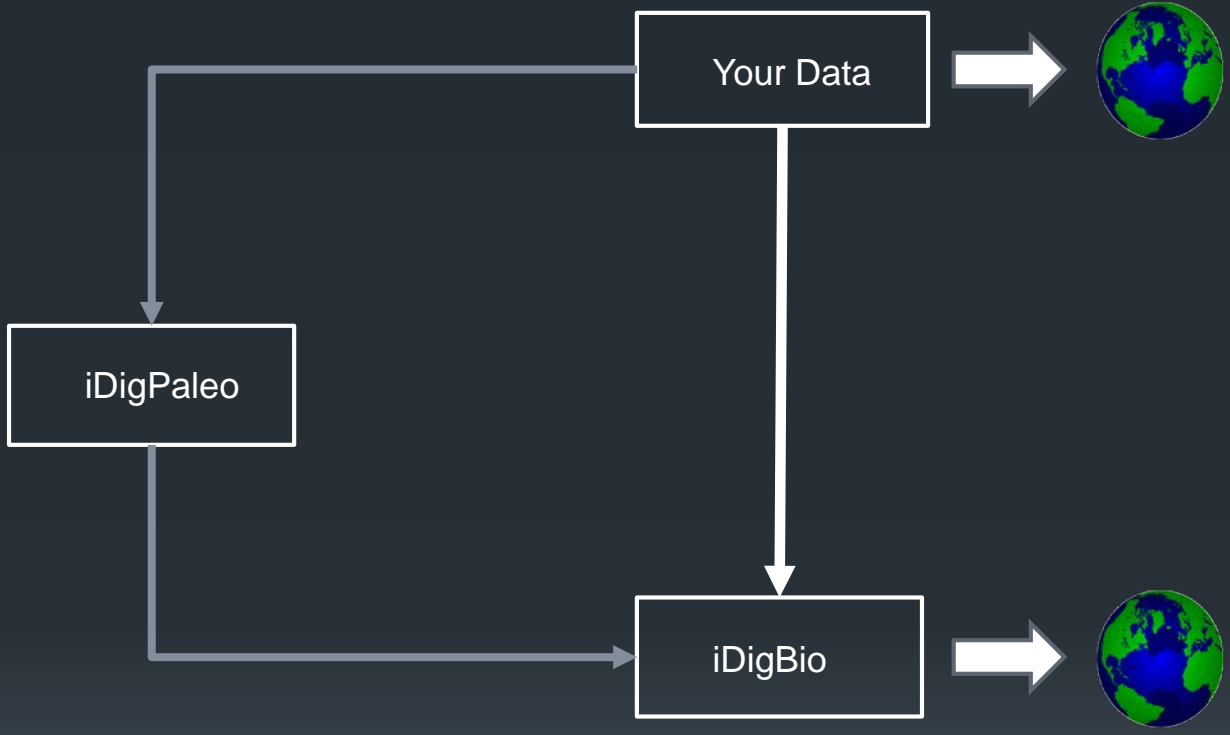
**Fossil insect discovery, research,  
and educational outreach**

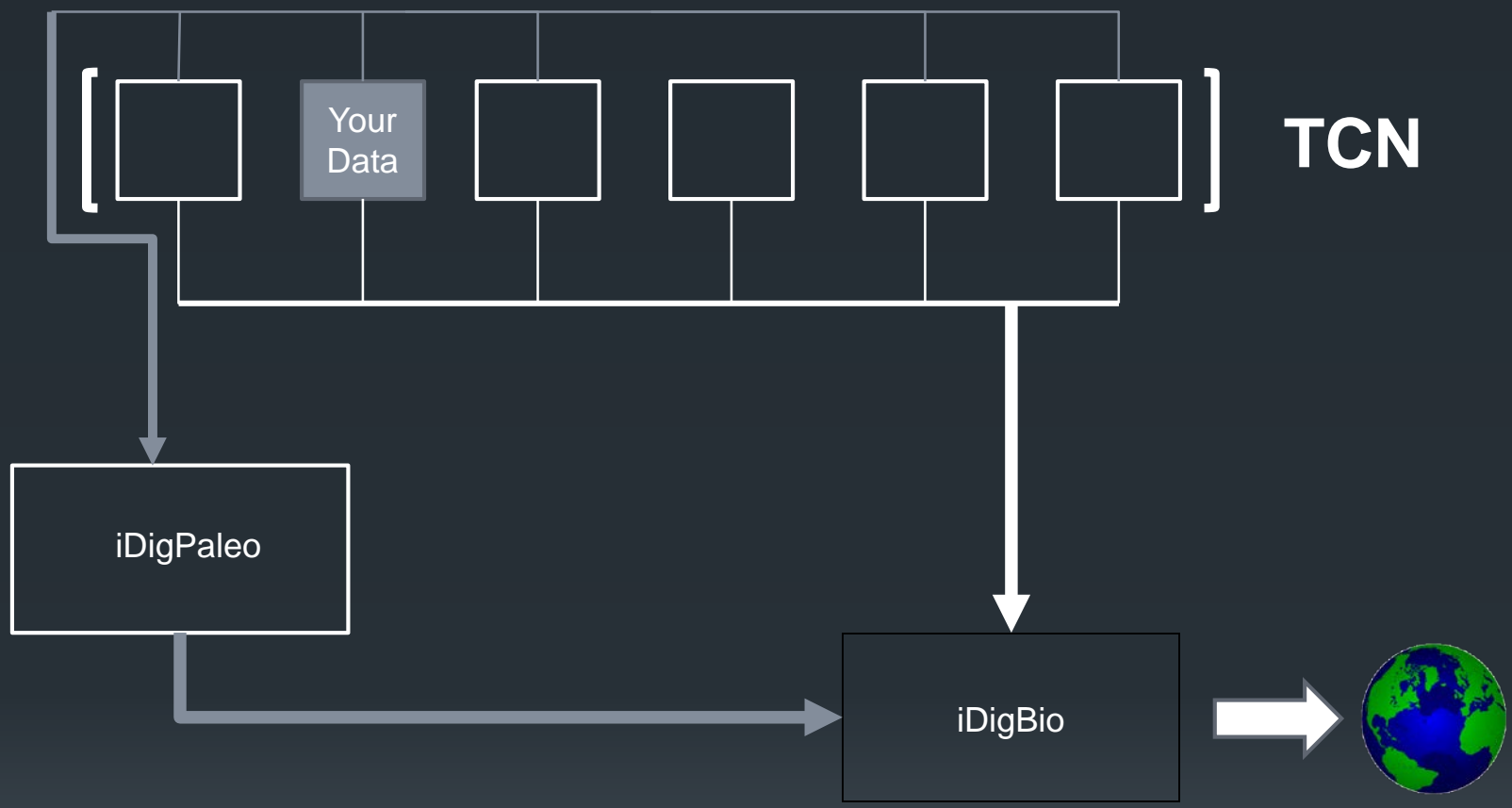
**Christopher Norris & Susan Butts  
Yale University  
Peabody Museum of Natural History**

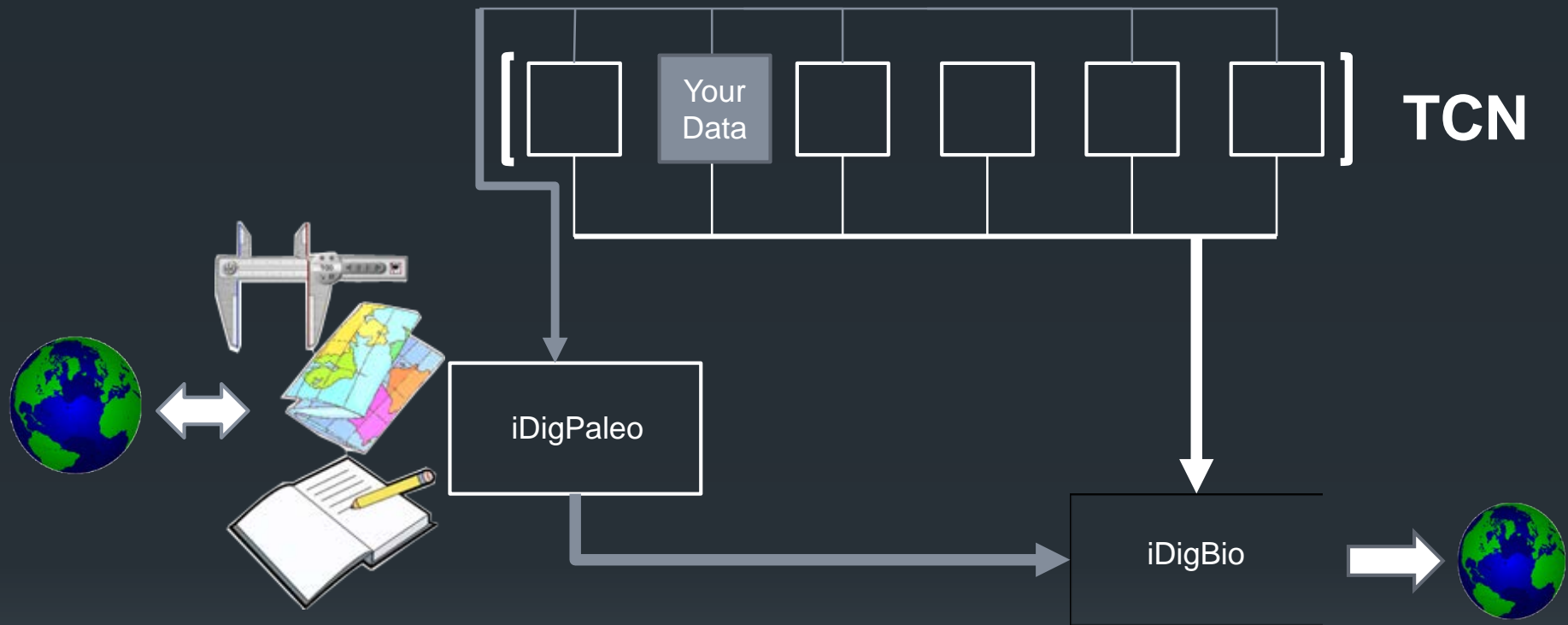


**iDigPaleo**  $\neq$  **iDigBio**

**iDigPaleo**  $\neq$  “Paleontology version  
of iDigBio”







 **fossil  
insect**  
COLLABORATIVE

**TCN: Fossil Insect Collaborative: A Deep-Time Approach to Studying Diversification and Response to Environmental Change**

- Lead: University of Colorado Museum of Natural History - Smith (also now STEPPE GSA) and Karim
- YPM: Butts and Norris





*digitize and make available all the major collections of fossil insect specimens in the United States*

### Research Goals

- understand response to environmental change and patterns of biodiversity through time
- phylogenetic reconstruction, evolution of morphological characteristics, and studies of overall patterns of diversification in deep time



YPM-IP.1002 *Dunbaria fasciipennis* Holotype



**HARVARD UNIVERSITY**  
**Museum of Comparative Zoology**

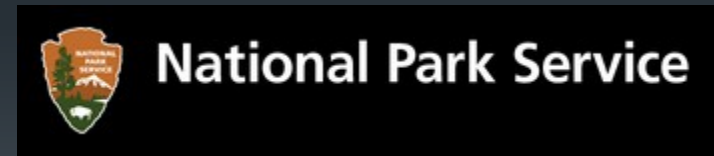
**KU** BIODIVERSITY INSTITUTE &  
NATURAL HISTORY MUSEUM  
The University of Kansas



PEN?



PEN



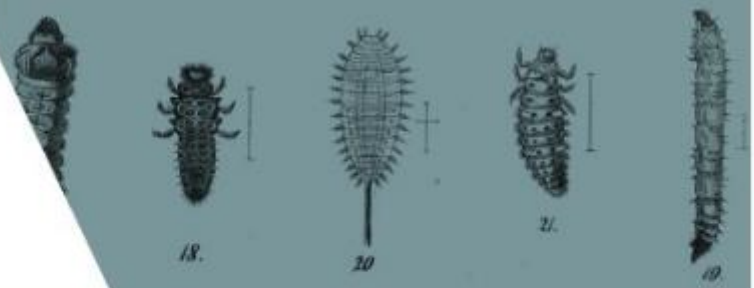




# iDigPaleo

- aggregate FIC data for iDigBio
- educational resources for fossil insects
- central resource to interact with bio and geo cyberinfrastructure initiatives

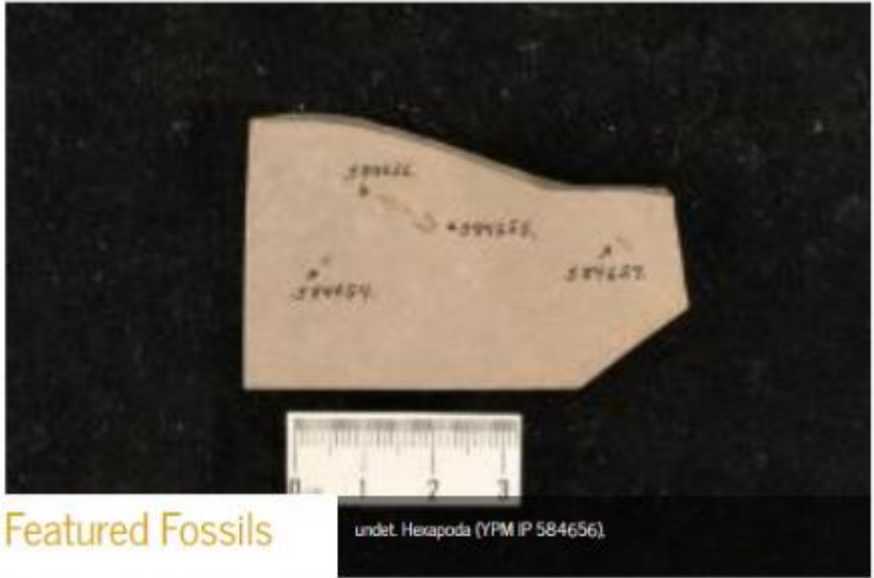




News

Society for the Preservation of Natural History Collections  
Annual Meeting

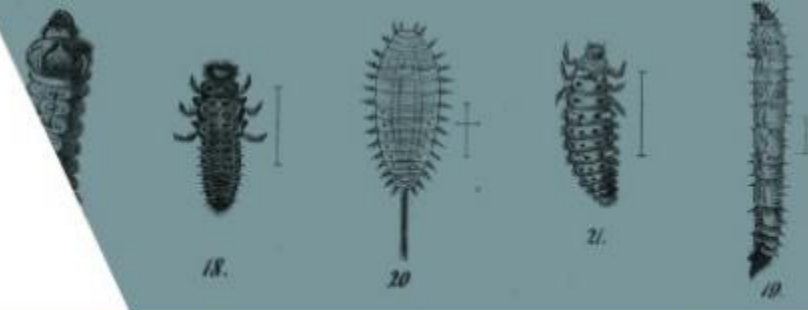
More



Featured Fossils

undet. Hexapoda (YPM IP 584656)

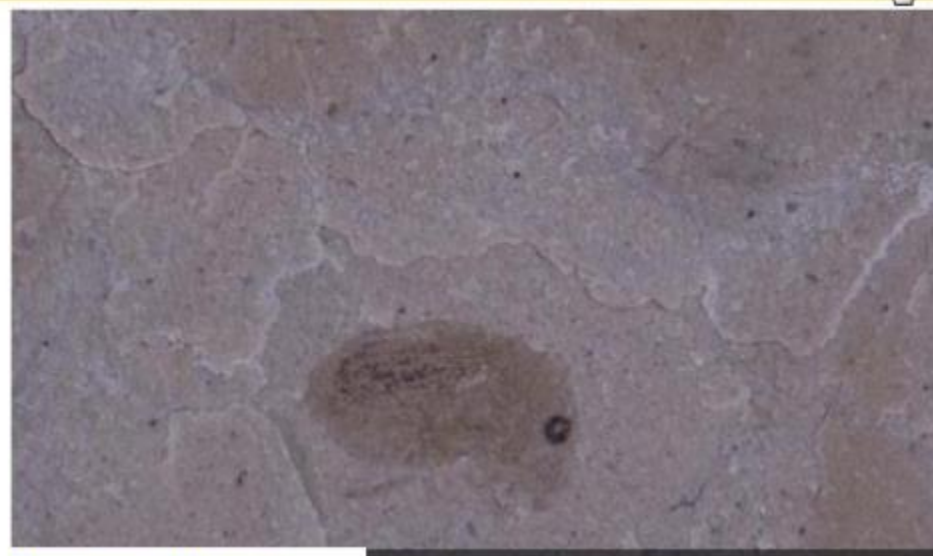




News

Society for the Preservation of Natural History Collections  
Annual Meeting

More



Featured Fossils

Curculionidae (CUMNH UCM 39414)



Making data and images of  
millions of insect specimens  
available on the web



## LOGIN

E-MAIL ADDRESS

susan.butts@yale.edu

PASSWORD

••••••••

LOGIN

[Click here to register](#)  
[Forgot your password?](#)



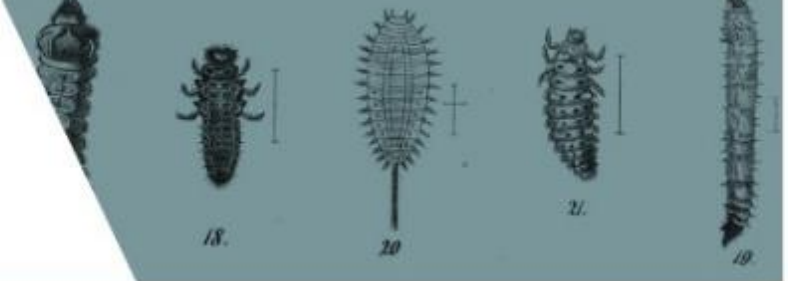
## Featured Fossils

(PAL576853.11701805)



Society for the Preservation of Natural History Collections  
Annual Meeting

More



6292 SPECIMEN RESULTS 

SOURCE:  FOSSIL/MODERN:  FOSSILS  HAS MEDIA:  HAS MEDIA



YPM IP 223880  
Urogomphus eximius



YPM IP 454215  
undet. Zygoptera



YPM IP 794004  
undet. Zygoptera



YPM IP 793713  
undet. Vespidae



YPM IP 793298  
undet. Vespidae



YPM IP 454356  
undet. Trichoptera



YPM IP 454362  
undet. Trichoptera



YPM IP 454362  
undet. Trichoptera

**FILTER BY**

**COMMON NAME**

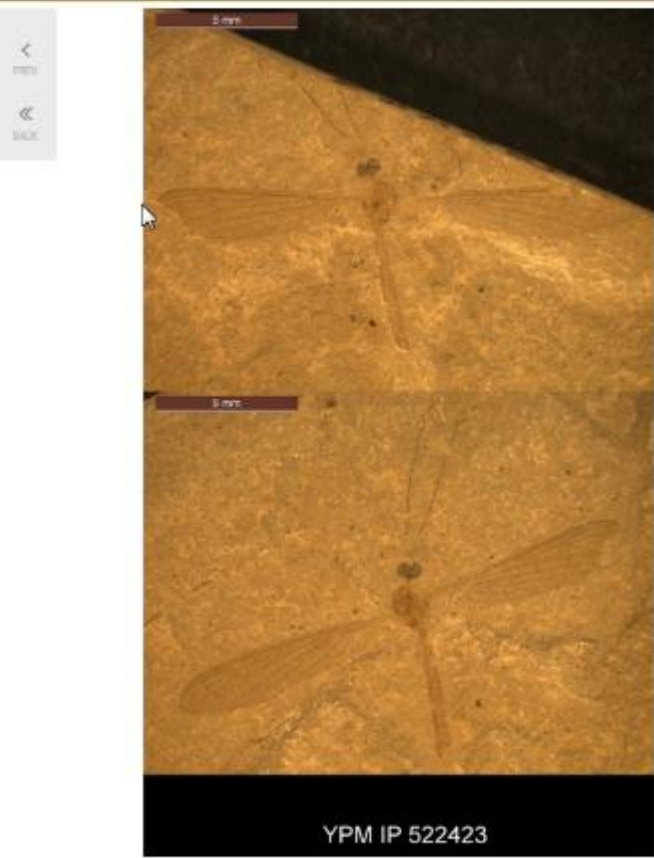
- Ants
- Ants, bees, and wasps
- Ants, bees, narrow-waisted hymenopterans, and true wasps
- Aphids
- Arthropods
- Bee fly
- Beetles
- [and 57 more](#)

**GENUS**

- Acrocera
- Actea
- Anthrocothremma
- Anthrakoris
- Aphaenogaster
- Apithanus
- Artinska
- [and 92 more](#)

**CONTINENT**

- Europe



undet. Tipulidae; feather on slab with

True Flies, Mosquitoes and Gnats

YPM IP 522423

Yale Peabody Museum of Natural History

TAXONOMY

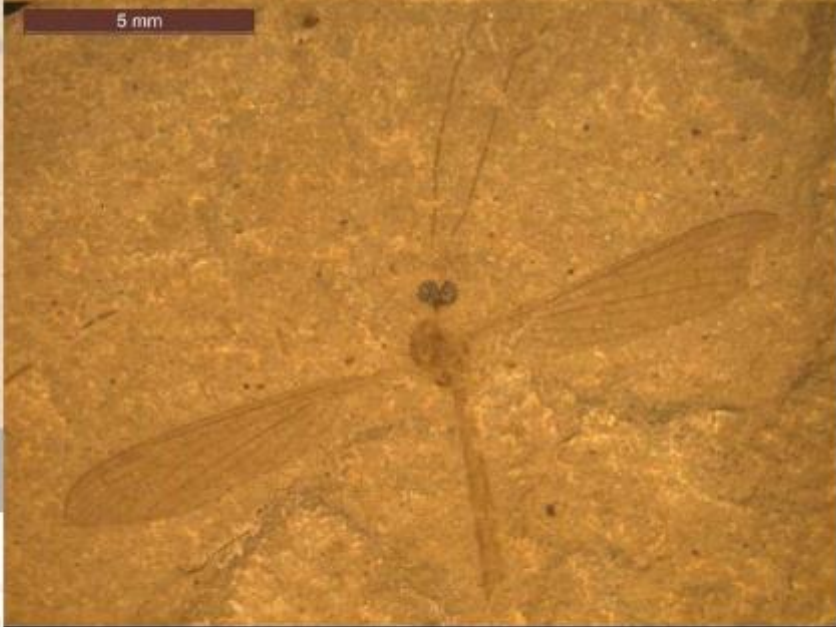
Animalia > Arthropoda > Insecta > Diptera > Tipulidae > Family

LOCALITY

North America > USA > Colorado > Garfield County > N end of Radar Dome



-  ADD TO ASSIGNMENT
-  COMMENTS (0)
-  SHARE



- ADD TO ADDRESS BOOK
- COMMENTS (0)
- SHARE



ADD TO ASSIGNMENT

wingspan ✕

This image is scaled at 1mm = 5% of width.  
To change scale enter the length with units (mm, cm, m, km, in, ft, miles, etc.) of the currently selected measurement below.

Length:  SET

YPM IP 522423





5 SPECIMEN RESULTS

SOURCE:  HAS MEDIA:  FOSSIL/MODERN:  SERIES:

COMMON NAME:

FILTER BY  
CONTINENT  
North America

YPM IP 454405  
undet. Asilidae

YPM IP 584576  
undet. Asilidae

YPM IP 584521  
undet. Asilidae

YPM IP 454423  
Asilidae?

YPM IP 454441

Making data and images of  
millions of insect specimens  
available on the web



ABOUT

NEWS

BROWSE

JOIN

## ADD ITEM TO ASSIGNMENT

Rio Blanco Field Trip

Select a assignment

Rio Blanco Field Trip

OR

CREATE A NEW ASSIGNMENT

NAME

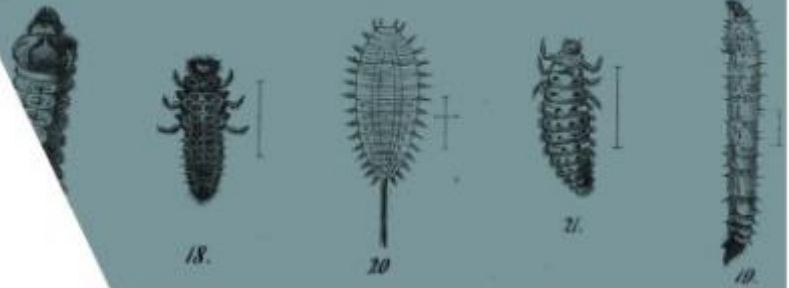
Your assignment

DESCRIPTION

SAVE

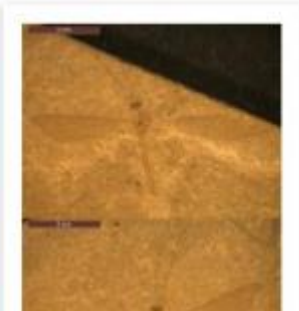
5 mm

YPM IP



3286 SPECIMEN RESULTS 

SOURCE: [YALE PEABODY MUSEUM OF NATURAL HISTORY](#) FOSSIL/MODERN: [FOSSILS](#) HAS MEDIA: [HAS MEDIA](#) SERIES: [EOCENE](#)



FILTER BY

COMMON

- Ants
- Ants, bees, and wasps
- Ants, bees, narrow-waisted hymenopterans, and true wasps
- Arthropods
- Bee fly
- Beetles
- Booklice and barklice
- [and 50 more](#)

GENUS

- Acrocera
- Bembidium
- Corizus
- Lithohypoderma
- Otiorynchus
- Plecia
- Pronemobius

CONTINENT

Susan Butts,  
susan.butts@yale.edu

- Classroom**
- User Profile
- Logout



[← BACK](#) **RIO BLANCO FIELD TRIP** (21 ITEMS)



Geology 540 Green River Field Trip

- All assignments
- Edit Name/Description
- Share Assignment
- Manage Assignment Access
- Start presentation
- Download as:
  - Checklist [pdf]
  - PDF (thumbnails) [pdf]
  - Excel (basic information) [xlsx]
  - PowerPoint (basic information) [pptx]
- New Assignment
- New User Group
- Manage Your User Groups

COMMENTS

add your comment

SAVE



YPM IP 237183, undet. Tipulidae



YPM IP 522446



undet. Tipulidae

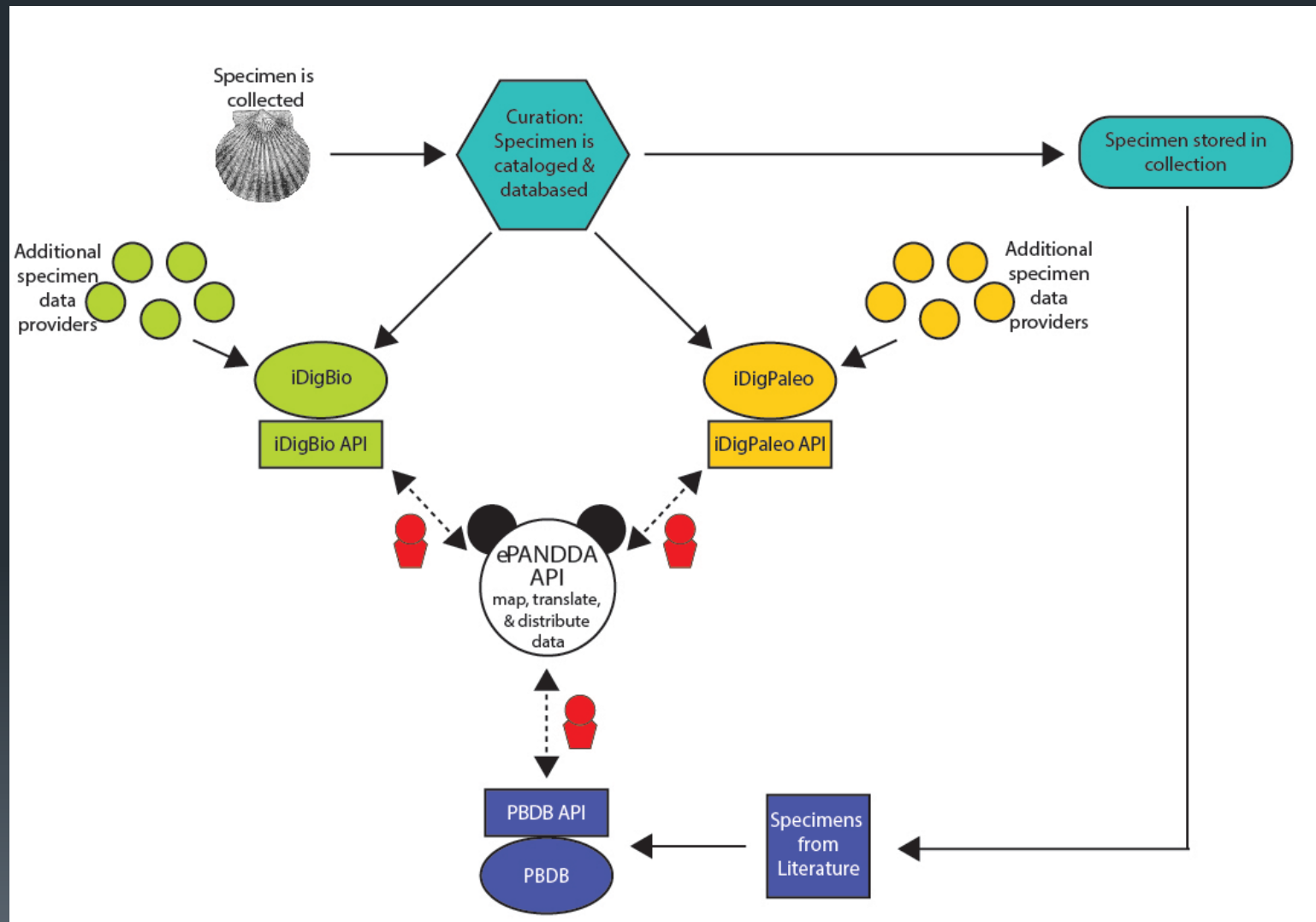


- Tools in development
  - Integrated mapping in geologic history (PBDB API, GPlates API)
  - Comments/annotations returned to institution (i.e. update taxonomy)
  
- Teacher workshop –directions and outcomes
  - Directions
    - critique of front end operation
    - provide curated collections (assignments)
    - provide background info
    - provide videos from collections/field
  
  - Outcomes
    - lesson plans based on NGSS

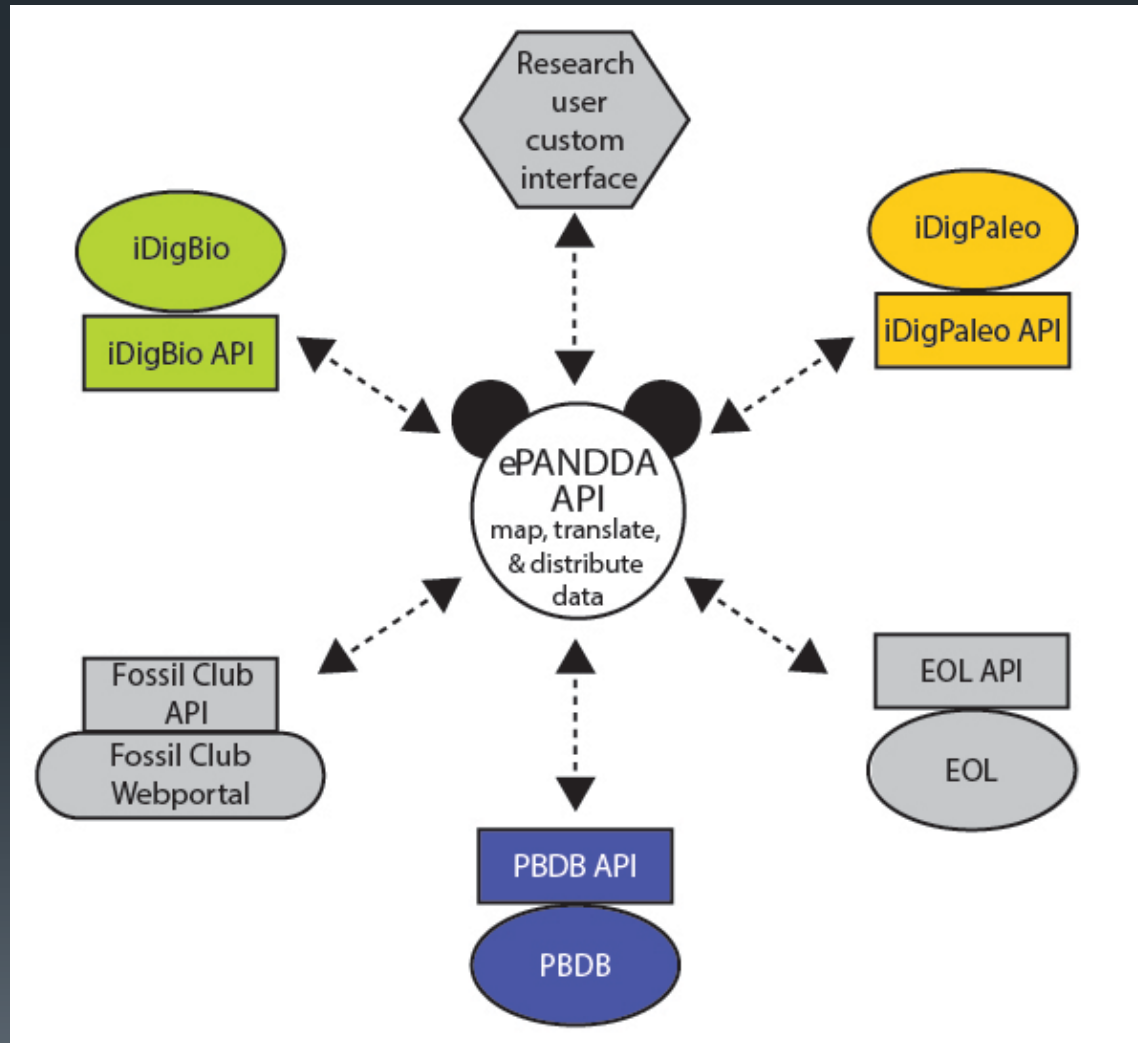


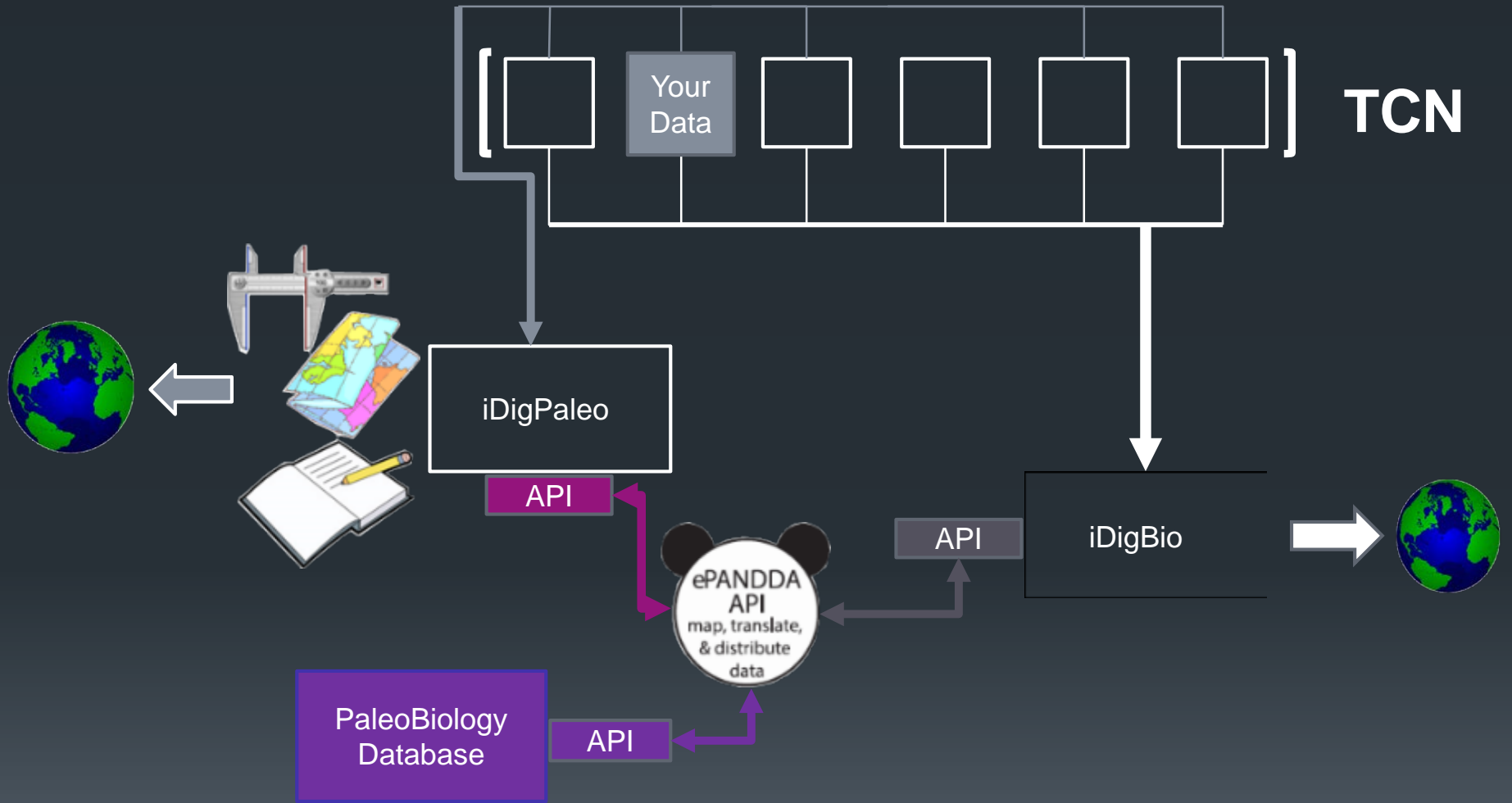
**iDigPaleo Teacher Workshop**  
**Yale Peabody Museum**  
**July 20-21, 2015**

# ePANDDA



# ePANDDA







# Potential for collaboration

Pass your data to us, have us aggregate it and serve it to iDigBio



Talk to us about turning your data into a dynamic resource for education and public use access



# Acknowledgements

Development of iDigPaleo is supported through NSF EF 1305027: Digitization TCN: Collaborative Research: Fossil Insect Collaborative: A deep-time approach to studying diversification and response to environmental change

ePANDDA is supported through NSF ICER 1540984: EarthCube IA. Collaborative Proposal: ePANDDA: Enhancing Paleontological and Neontological Data Discovery API





iDigPaleo:  
idigpaleo.org  
(in development)

Project web page:  
fossilinsects.colorado.edu



The screenshot shows the Facebook profile for the Fossil Insect Collaborative-Digitization Project. The cover photo features a collage of various fossilized insects. The page name is "Fossil Insect Collaborative-Digitization Project" with "Education" listed as the category. Navigation tabs include "Timeline", "About", "Photos", "Likes", and "Videos".

**ABOUT**

- Ask for Fossil Insect Collaborative-Digitization Project's address
- Ask for Fossil Insect Collaborative-Digitization Project's phone
- <http://fossilinsects.colorado.edu/>

**VISITOR POSTS**

- Ashwini Srivastava** (June 26 at 11:01am)  
I have discovered and described number of fossil insects and insect... See More
- Adam Alfano** (February 21 at 1:16am)  
See photo

**Timeline**

- Fossil Insect Collaborative-Digitization Project** shared Sam Heads's post (September 11 at 12:31pm)  
From Fossil Insect Collaborator Sam Heads. #FossilFriday!



Sam Heads with Michael Jared Thomas at Illinois Natural History Survey