

2013 - 2018



AMNH • INHS • MCZ • CU-Boulder • UCMP • USNM • VMNH  
YPM • Florissant • LACM

# FIC Results

---

- ~**182,000** (and counting) digital specimen records
- ~ **70,000** specimen images
- **iDigPaleo** hub for specimen data & educational resources



2017 - 2019



LACM



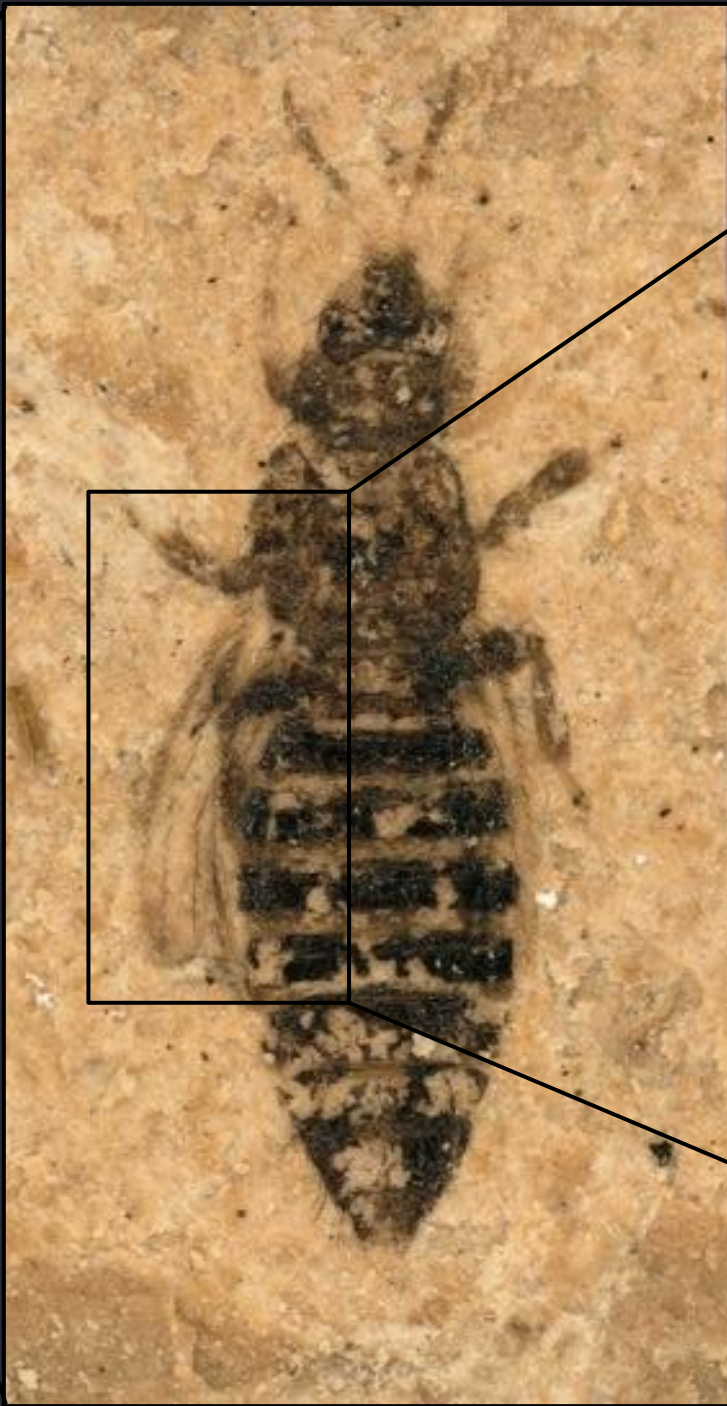
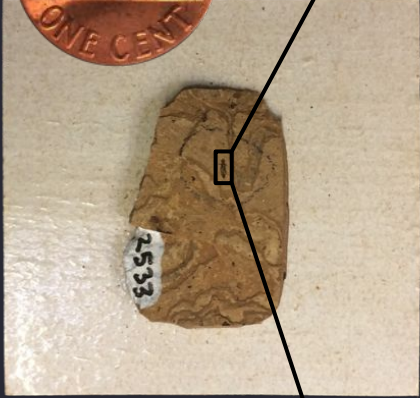
# Statz Collection

---

- Oligocene, Germany
- ~ 4,200 spms, approx. 25% types/figured
- ancillary literature
- imaging-intensive

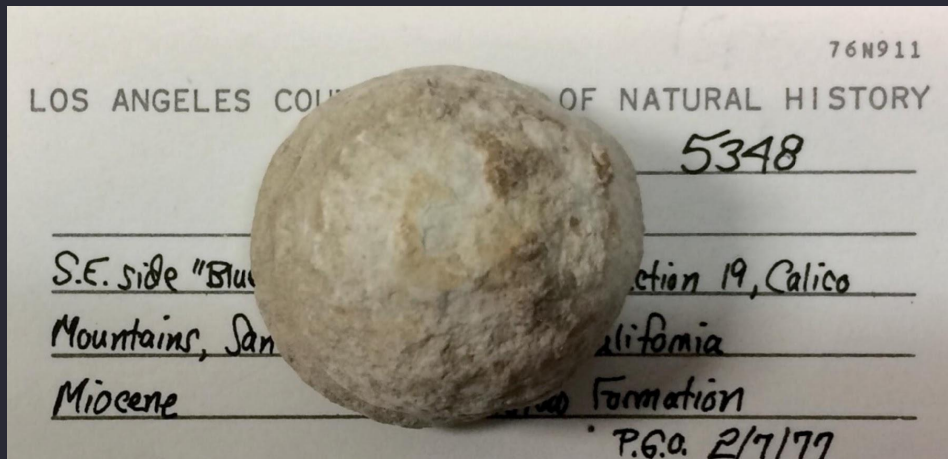






# Barstow Collection

- Miocene, California
- ~ 4600 spms
- silicified specimens contained in carbonate nodules
- understudied fauna





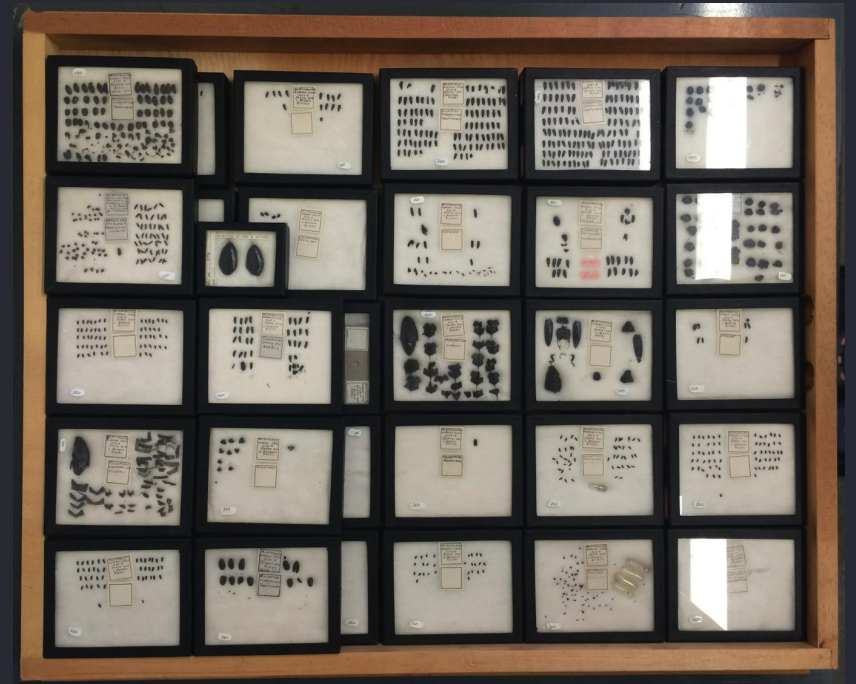
# Rancho La Brea Collection

- Late Pleistocene, California
- ~ 15,600 spms
- asphalt-preserved
- focusing on types & "Clyde" collection



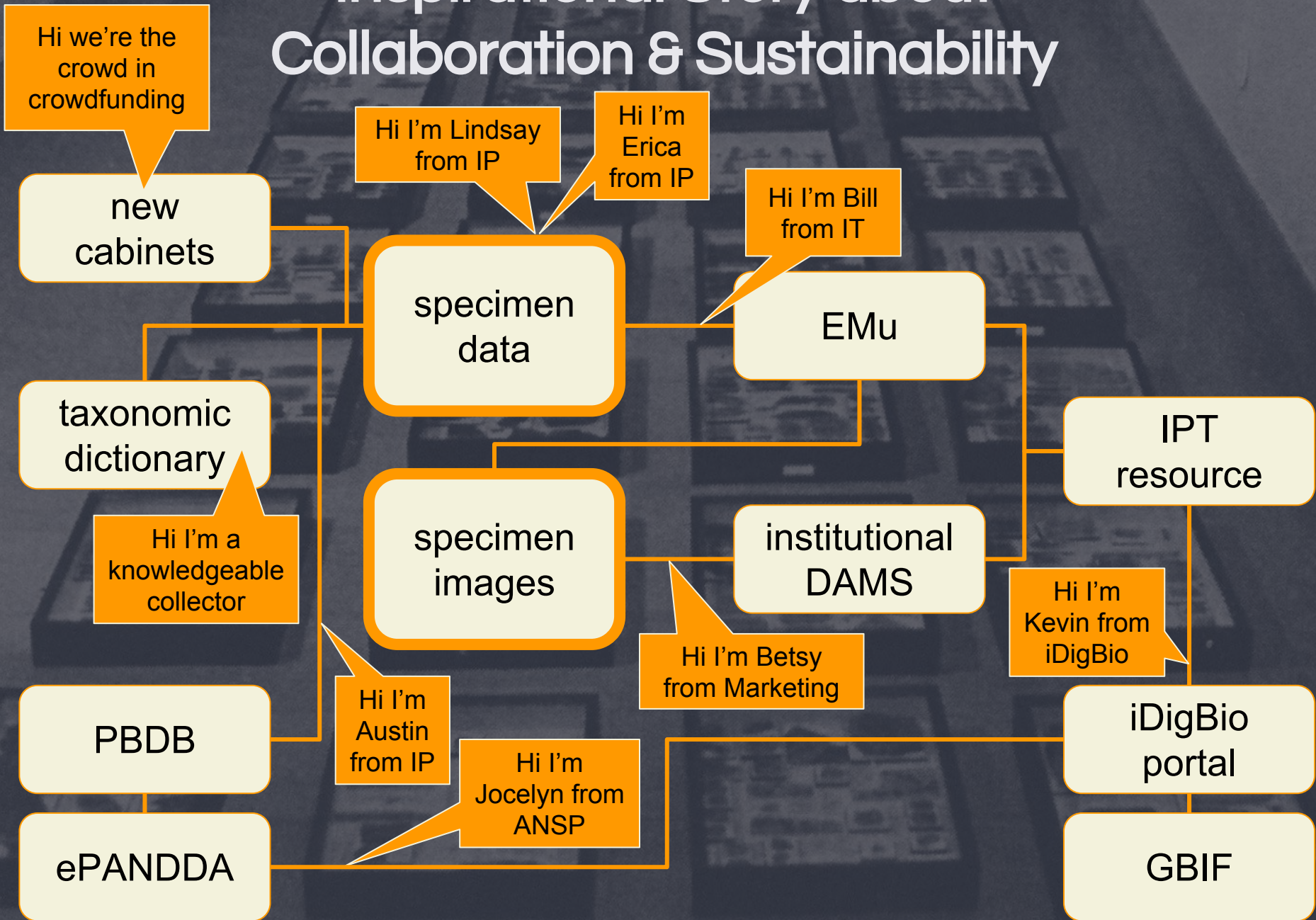
# McKittrick Collection

- Late Pleistocene, California
- ~ 2700 spms
- asphalt-preserved





# Inspirational Story about Collaboration & Sustainability





# Cautionary-but-Optimistic Thought about a Lesson Learned





# Thank you!

@FossilInsectTCN • @FossilsofLA

## ACKNOWLEDGEMENTS



Funded by the National Science Foundation through the *Digitization TCN: Collaborative Research: Fossil Insect Collaborative: A deep-time approach to studying diversification and response to environmental change* & through the *Digitization PEN: Digitizing the Fossil Insects of LA: Critical Additions to the Fossil Insect Collaborative* (NSF DBI 1702342)